



EEE = Exterior Elevated Elements:

These elements include but are not limited to, wood or metal railings, sheet metal details, thresholds, stair assemblies (wood) and their attachments to the building structure, if the building structure is wood. All Exterior Elevated Elements should be a minimum of six (6) feet above the ground level.

LBC = Load Bearing Components:

Load Bearing Components are made of wood or supported by wood. Load bearing components support the structure and the weight of the structure per the original design. All Load Bearing Components should be a minimum of six (6) feet above the ground, except in the case where the load bearing wood structure is attached to the ground level.

AWE = Associated Waterproofing Elements:

Associated Waterproofing Elements protect the structure against water intrusion. These Associated Waterproofing Elements are not limited to, waterproof deck coating system, waterproofing covering wood surfaces, waterproofing at stucco walls, sealant joints around posts and attachments where water may enter the building, flashings, thresholds and other metal fabrications designed and intended to keep water out of the building structure.

IS = Interior Space:

Interior Space IS NOT included in the EEE Inspections.

ES = Exterior Space:

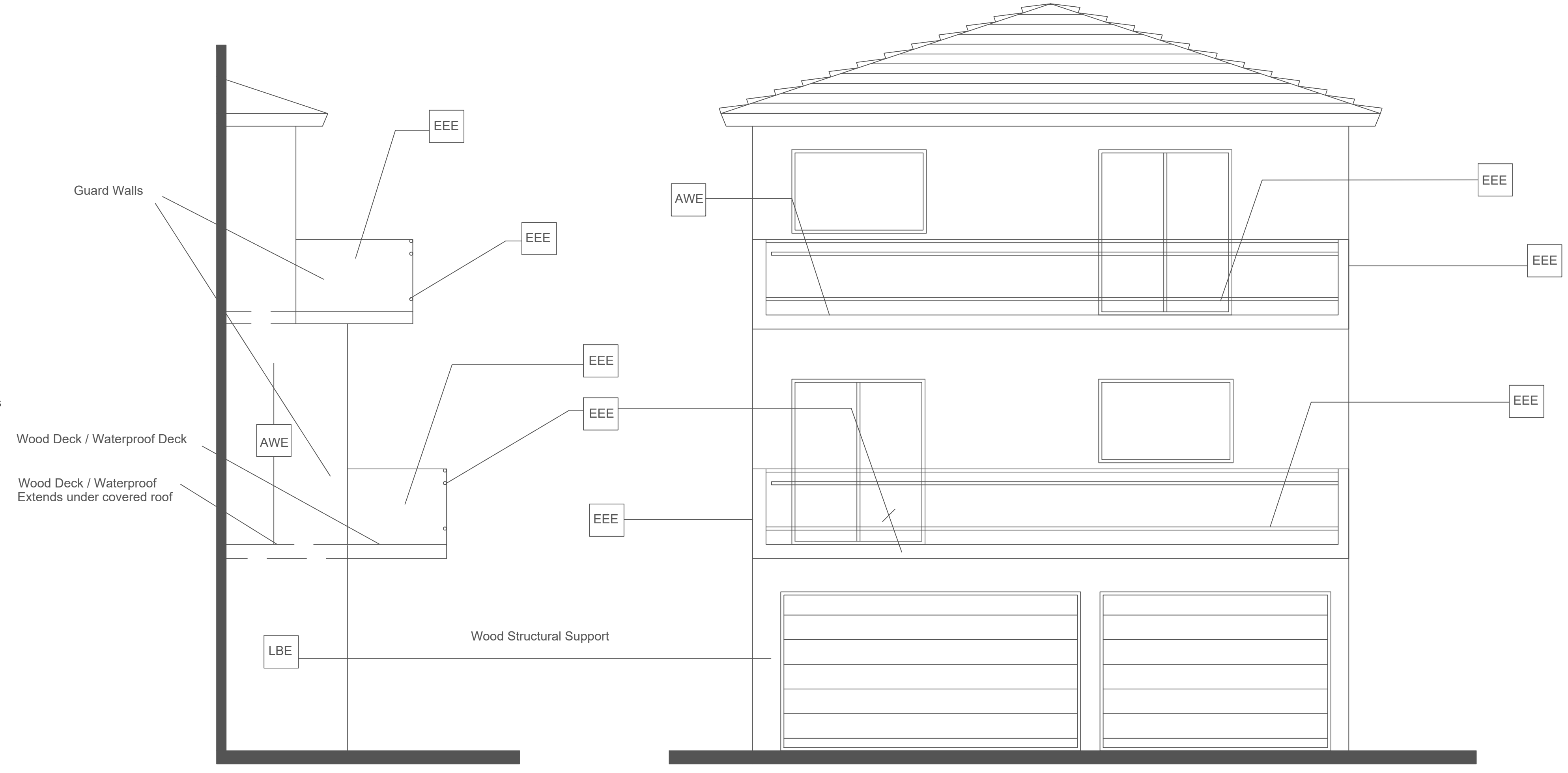
Exterior Space IS included in the EEE Inspections.

IS to ES = Interior to Exterior Space:

Where a person is standing in the interior space, travels through a door separating interior from exterior space, and lands on the exterior Associated Waterproofing.

Inspection of Exterior Elevated Elements that Extend Beyond Exterior Building Walls:

Where there is an exterior building wall, inspection of the EEE occurs where there are Exterior Elevated Elements (EEE), Load Bearing Components (LBC) and Associated Waterproofing Elements (AWE). This occurs where a person is standing or sitting in the Exterior Space with one or more of the following: Elevated Exterior Elements (EEE) Load Bearing Components (LBC) or Associated Waterproofing Elements (AWE). The inspection does not occur where the person is sitting or standing on the Interior Space. This occurs where there is a transition from an exterior space to an interior hallway or interior space.



E3 Inspection Association.com
www.E3-Inspection-Association.com

THESE DRAWINGS ARE THE PROPERTY OF THE ASSOCIATION OF PROFESSIONAL EXTERIOR ELEVATED ELEMENTS INSPECTORS, INC. THE DESIGN AND TECHNICAL INFORMATION ARE PROPRIETARY AND NOT TO BE REPRODUCED IN ANY MANNER WITHOUT EXPRESS WRITTEN APPROVAL.

REVISIONS	NO.	DATE	REMARKS
	1		
	2		
	3		
	4		

OWNER:



SHEET TITLE:

SCALE: AS NOTED
DATE:
JOB NO:
DESIGN BY:
DRAWN BY:
SHEET NO